

LE 3000

The air heater LE 3000 is equipped with a performance range of 2.2 kW at 120 V, as well as 3.3 kW at 230 V. The air supply as well as air outlet connections are compatible with the successor LHS 20 and its accessories.

Air heater

LE 3000



Combination possibilities

Leister air heater with Leister blower at maximum heat power. Hot-air temperature 3 mm after air outlet, measured at the hottest point, at hose length 3 m and unimpeded air outflow. Air flow in l/min when air heater is not heated and air inlet temp. is 20 °C.

Power Type	Number LE × Power consumption W	Air flow l/min	Temperature °C
ROBUST	1 × 3300	1 × 400	530
ROBUST	2 × 3300	2 × 320	600

Air flow and temperature specifications may deviate from ideal values due to modifications of the hot-air system (nozzles, hose length, etc.).

Blowers and accessories in brochure «Industrial processes with hot air».

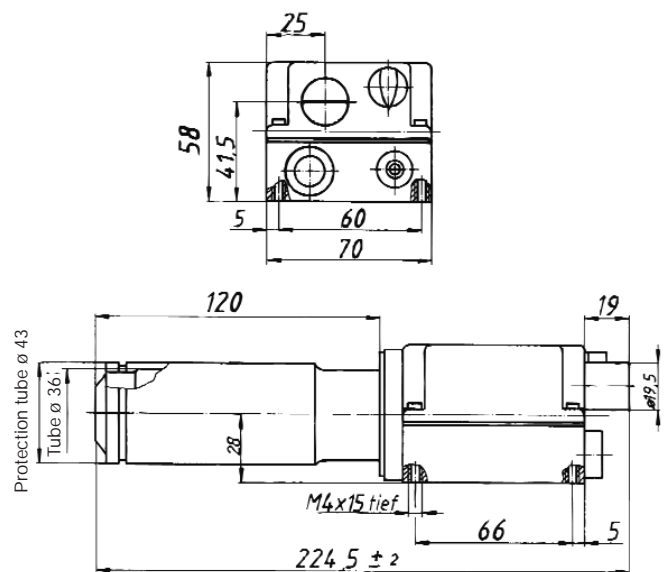
Technical data LE 3000

	Without Electronic	With Electronic	For KSR DIGITAL
Heating power steplessly adjustable with potentiometer		•	
Thermoswitch for device protection	•	•	•
Integrated heating element protection		•	•
Remote control interface for KSR DIGITAL temperature regulator or external PLC control 2.6 – 5.8 V incl. 5 m cable and plug			•
Max. air outlet temperature °C	650	650	650
Min. air flow l/min.	120 V 230 V	200	300
Max. air inlet temperature °C	100	50	50
Max. ambient temperature °C	100	60	60
Weight g	500	500	500
Mark of conformity	CE	CE	CE
Approval mark		Ⓢ	
Protection classe II	Ⓜ	Ⓜ	Ⓜ

Voltage	V –	120	230
Power consumption	kW	2.2	3.3
Without Electronic	Order no.		101.434
With Electronic	Order no.	101.436	101.426
for KSR DIGITAL	Order no.		101.382

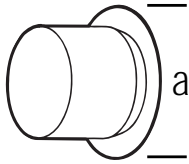
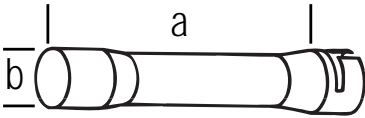
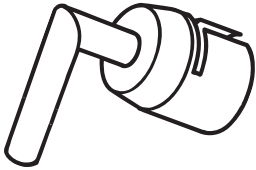
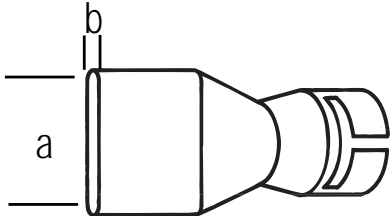
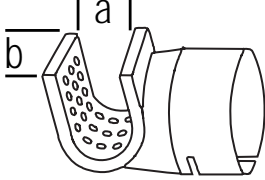

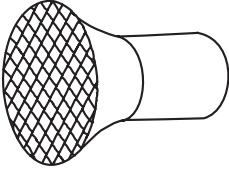
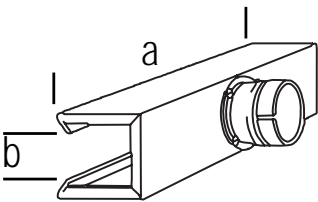
Additional versions on request

Installation dimensions in mm



Accessories LHS Type 20 and LE 3000

(Ø 1.44 inch)

125.316		<p>Flange connector, push-fit a = 2.44 inch</p>
107.251		<p>Extension tube, push-fit (a × b) 8.27 × 1.44 inch</p>
107.003		<p>Deflecting nozzle 90°, push-fit Ø 0.47 inch</p>
107.261 108.078 105.982		<p>Wide slot nozzle, push-fit (a × b) 2.76 × 0.16 inch 3.94 × 0.16 inch 5.91 × 0.16 inch</p>
107.308 107.309		<p>Sieve reflector, push-fit (a × b) 1.34 × 1.97 inch 0.79 × 1.38 inch</p>
107.314		<p>Spoon reflector, push-fit (a × b) 0.98 × 1.18 inch</p>
107.319		<p>Sieve reflector, push-fit Ø 2.56 inch</p>
106.132		<p>Shell reflector, push-fit (a × b) 5.91 × 0.98 inch</p>